

Let's Grow Daffodils!

The Why, What, and How of
Growing Daffodils



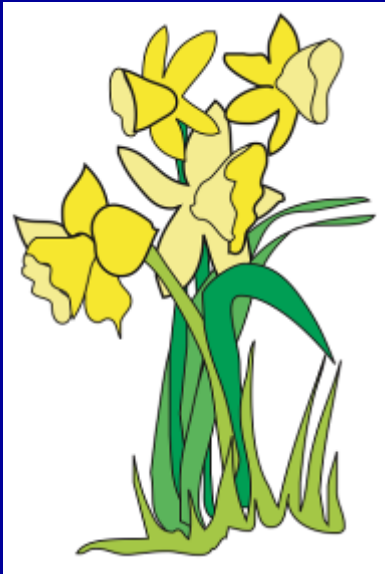
COPYRIGHT 2011 BY THE

AMERICAN DAFFODIL SOCIETY, INC.

All photos are copyright by Kirby Fong
except where marked otherwise

Why grow Daffodils?

They're beautiful,
and **DEER DON'T EAT THEM**



Daffodil Naming

Cultivars are cultivated varieties of daffodils and have (usually English) names; e.g. Ice Follies.

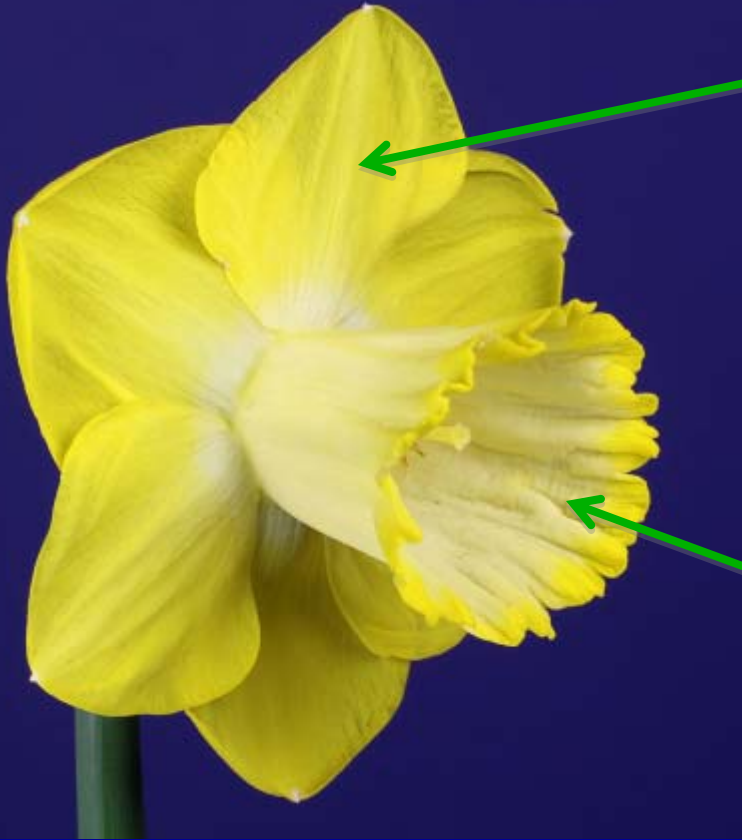
Species (i.e. wild) daffodils have only Latin botanical names; e.g. *Narcissus triandrus*.

Daffodil is the common English equivalent of the botanical genus *Narcissus*.

Both cultivars and species are of genus *Narcissus*.

Jonquil is used in some regions to mean the same as **daffodil**.

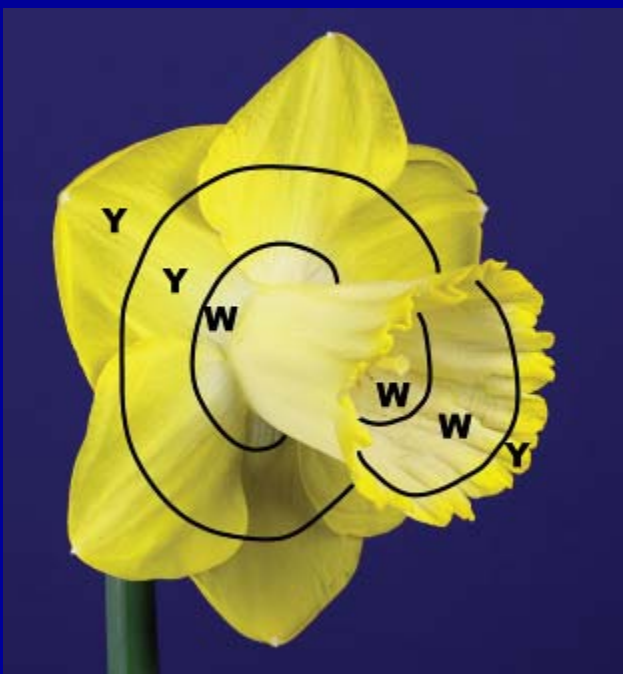
Two Major Parts of the Flower



Petals or perianth segments, collectively called the **perianth**

Cup, trumpet, or **corona**

Color Coding



A daffodil's **classification** has

Division Number and Color Code.

(to be explained)

1YYW-WWY

YYW = perianth colors
from the outside in

WWY = corona colors
from the base to the rim

Colors are represented by: **W** = White, **Y** = Yellow, **P** = Pink,
R = Red, **O** = Orange, **G** = Green

Daffodil Divisions

Daffodils are classified into 13 divisions.

Divisions 1 through 12 are for cultivars (cultivated varieties) and are based on the physical appearance of the flower. Cultivars always have common names – that is, names that are not scientific botanical names.

Division 13 is for wild or wild hybrid (species) daffodils having only (Latin) botanical names.

Definitions and examples of the divisions follow...

Division 1: Trumpet



One flower to a stem; corona (trumpet) as long as, or longer than, the perianth segments (petals)



Bravoure 1W-Y



American Dream 1Y-P



Denali 1W-W

Pink Silk 1W-P

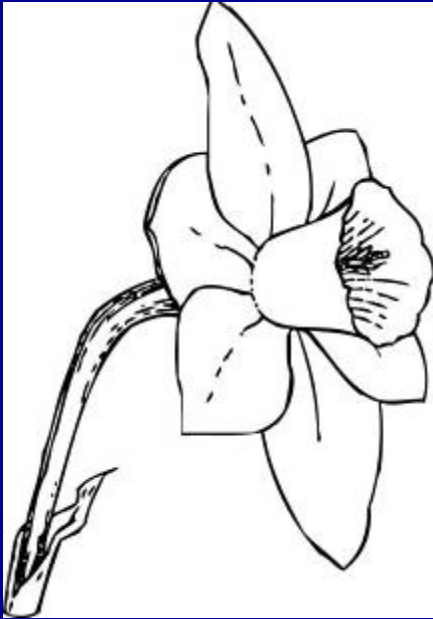


Tuscarora 1Y-Y



Trumpet Warrior 1YYW-WWY

Division 2: Large Cups



One flower to a stem; corona more than 1/3 but less than equal to the length of the perianth segments



Golden Aura 2Y-Y



Accent 2W-P



Bailey 20-O

Crown Gold 2W-O

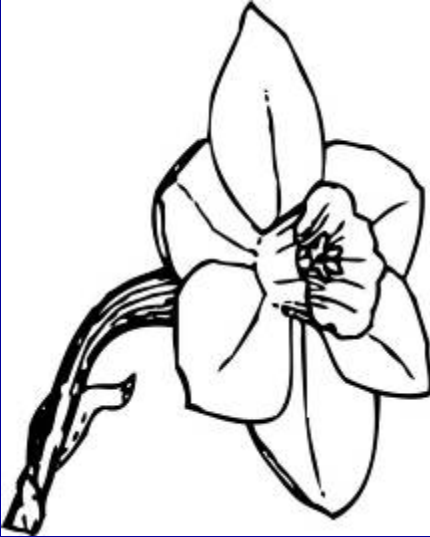


Valley Glow 2Y-R



Loch Lundie 2Y-O

Division 3: Small Cups



One flower to a stem; corona not more than $\frac{1}{3}$ the length of the perianth segments



New Penny 3Y-Y



Barrett Browning 3WWY-O



Badbury Rings 3Y-YYR



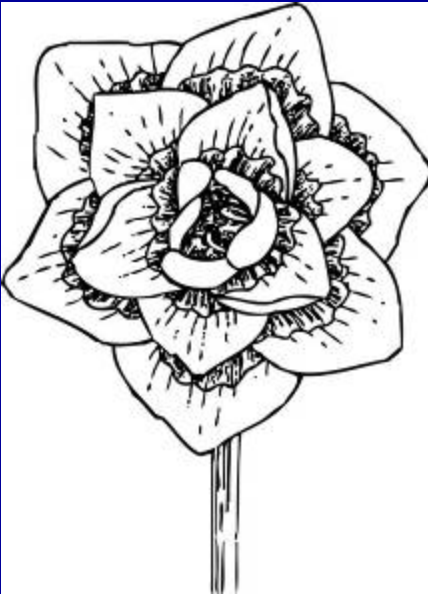
**Carneary
3W-Y**

**Green Pearl
3W-GWW**



Fussy 3Y-R

Division 4: Double



One or more flowers to a stem, with doubling of the perianth segments or the corona or both

Erlicheer 4W-Y



Tahiti 4Y-O

**Southern
Hospitality
4Y-R**



**Crackington
4Y-O**



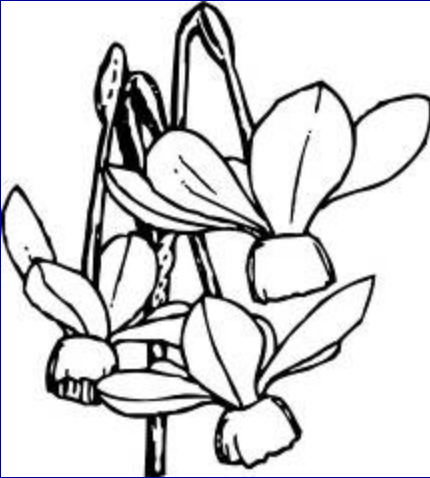
**Unique
4W-Y**



**Polgreen
4W-P**



Division 5: Triandrus



Characteristics of *Narcissus triandrus* predominant: usually two or more pendent flowers to a stem; perianth segments reflexed



Dutch Lemon Drops 5W-Y



Thalia 5W-W



Garden Chimes
5Y-Y



Sunday Chimes
5W-W

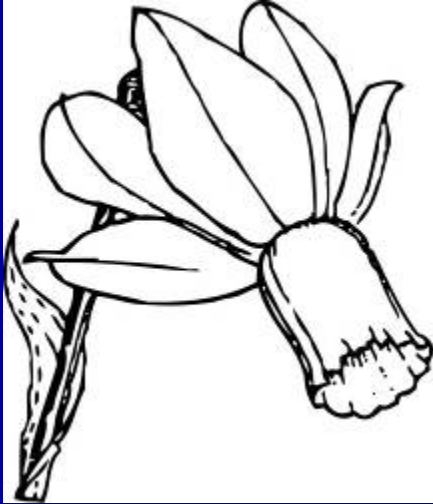


World Class
5Y-Y



Churchfield Bells
5Y-Y

Division 6: Cyclamineus



Characteristics of *Narcissus cyclamineus* clearly evident: one flower to a stem; perianth segments significantly reflexed; flower at an acute angle to the stem, with a very short pedicel (neck)



Rapture 6Y-Y



Beryl 6W-YYO



Trena
6W-Y



Velocity
6Y-R

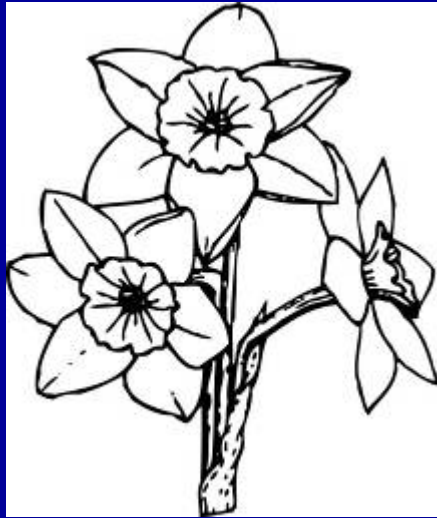


Sugar Rose
6W-GWP



Lemon Silk
6YYW-W

Division 7: Jonquilla and Apodanthus



Characteristics of Sections Jonquilla or Apodanthus clearly evident: one to five flowers to a stem; perianth segments spreading or reflexed; flowers usually fragrant

**Pipit
7YYW-W**



Stratosphere 7Y-O



**Dainty Miss
7W-GWW**



Golden Echo 7W-Y



Beautiful Eyes 7W-O

**Kokopelli
7Y-Y**



Limequilla 7W-W



Division 8: Tazetta



Characteristics of the *Narcissus tazetta* group predominant: usually three to twenty flowers to a stout stem; leaves broad; perianth segments spreading, not reflexed; flowers fragrant

Avalanche 8W-Y



Grand Primo 8W-Y



Golden Dawn 8Y-O →

← Innisidgen 8Y-O

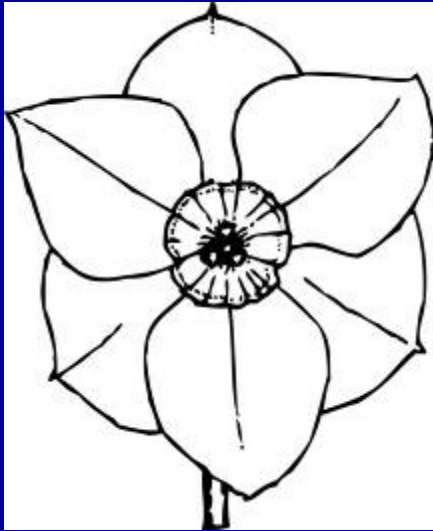


Matador 8Y-GOO →

← Martha Washington 8W-O



Division 9: Poeticus



Characteristics of the *Narcissus poeticus* group predominant: usually one flower to a stem; perianth segments pure white; corona usually disc-shaped, with a green or yellow center and a red rim; flowers fragrant

Actaea 9W-YYR



**Dactyl
9W-GYR**



**Cantabile
9W-GYR**



**Chesterton
9W-GYR**



**Vienna
Woods
9W-R**



Division 10: Bulbocodium



Characteristics of Section Bulbocodium clearly evident; usually one flower to a stem; perianth segments insignificant compared with corona; filament and style are usually curved.

**Kojak
10Y-GYY**



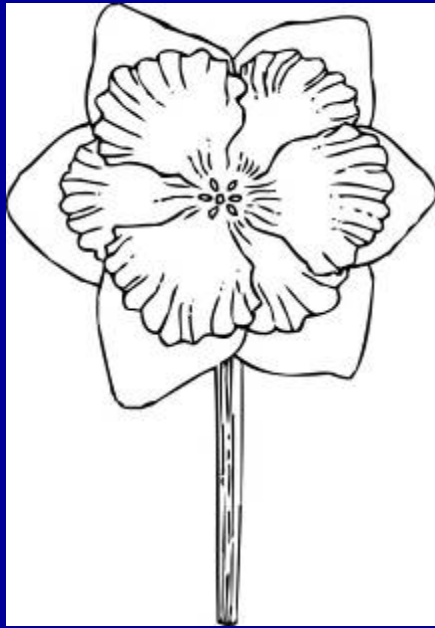


Apollo Gold 10Y-Y



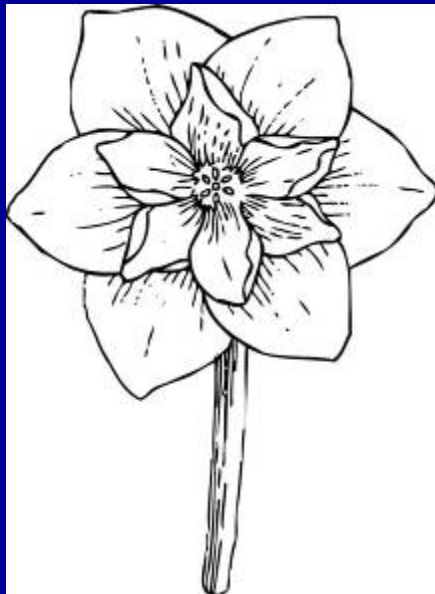
Mitimoto 10W-Y

Division 11: Split Corona



The corona is split – usually for more than half its length.

← 11a Collar Daffodils: Split-corona daffodils with the corona segments opposite the perianth segments; the corona segments usually in two whorls of three



← 11b Papillon Daffodils: Split-corona daffodils with the corona segments alternate to the perianth segments; the corona segments usually in a single whorl of six



← Jack Wood
11aY-YYO

Diversity
11aW-PPW →



← Jantje 11aY-O

Trump 11aW-Y →





Tripartite 11aY-Y



Jodi's Sister 11bW-P/W

Division 12: Other Cultivars

This is a miscellaneous division for cultivars that do not fit any of the other eleven divisions.



Mesa Verde 12G-GGY



Toto 12W-W



Canyon Wren 12Y-O



Tête-à-Tête 12Y-Y

Division 13: Botanical

Division 13 is for daffodils distinguished solely by botanical name.



***Narcissus rupicola* 13**



***Narcissus obvallaris* 13**



Copyright 2011 by Mary Lou Gripshover

← *Narcissus triandrus*
ssp. pallidulus 13

Narcissus →
jonquilla 13



Copyright 2011 by Mary Lou Gripshover



Copyright 2011 by Mary Lou Gripshover

← *Narcissus*
tazetta 13

Narcissus →
cyclamineus 13



Daffodil flowers come in all sizes

Flowers range from 1/2 inch to 5 inches in diameter.
Stems range from 3" to over 24" in height.

Standard

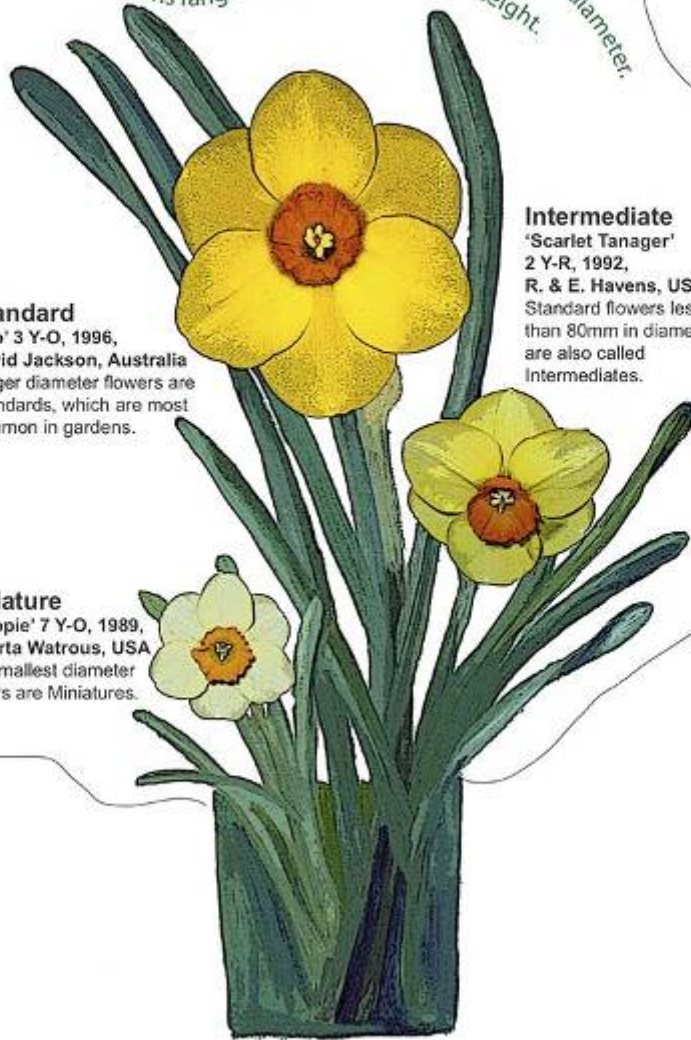
'Tao' 3 Y-O, 1996,
David Jackson, Australia
Larger diameter flowers are
Standards, which are most
common in gardens.

Intermediate

'Scarlet Tanager'
2 Y-R, 1992,
R. & E. Havens, USA
Standard flowers less
than 80mm in diameter
are also called
Intermediates.

Miniature

'Chappie' 7 Y-O, 1989,
Roberta Watrous, USA
The smallest diameter
flowers are Miniatures.



Daffodil Bulbs



The pointed end goes up!

Planting Daffodils



When to Plant



Growing Conditions

1. Sun
2. Good Drainage
3. Don't water in summer
4. Neutral or slightly acid soil
5. Low nitrogen, high potassium if you fertilize

Daffodil Fertilizer
5-10-20

DIRECTIONS: Because Daffodils and other bulbs produce new roots in fall, the best time to fertilize is in fall. Scatter Daffodil Fertilizer on top of the soil after planting and every fall thereafter for the best performance from your bulbs. Apply at the rate of 1 lb (approximately 1/2 cup or one handful) per 10 square feet. A light dressing (1/4 cup per 10 square feet), applied as new growth begins to push through the soil in spring, is also beneficial.

GUARANTEED ANALYSIS

Total Nitrogen (N)	5.00%
3.8% Ammoniacal Nitrogen	
1.1% Urea Nitrogen	
Available Phosphate (P ₂ O ₅)	10.00%
Soluble Potash (K ₂ O)	20.00%
Boron (B)	0.02%
Total Copper (Cu)	0.05%
0.01% Water Soluble Copper (Cu)	
Total Iron (Fe)	0.10%
0.02% Water Soluble Iron (Fe)	
Total Manganese (Mn)	0.05%
0.01% Water Soluble Manganese (Mn)	
Total Zinc (Zn)	0.05%
0.01% Water Soluble Zinc (Zn)	

Derived from: Urea, diammonium phosphate, sulfate of potash, sodium borate, copper sulfate, copper oxide, ferrous sulfate, ferric oxide, manganese sulfate, manganese oxide, zinc sulfate, and zinc oxide.

Chlorine (Cl) not more than 1.5%.

After Bloom



Don't braid the foliage! For companion plants, type as one line

<http://www.hort.cornell.edu/compos/FeaturedCompos/OtherSuggestedCompos/All%20Narcissus%20Compos/NarcissusCompos.htm>

If online, click on → <http://www.hort.cornell.edu/compos/FeaturedCompos/OtherSuggestedCompos/All%20Narcissus%20Compos/NarcissusCompos.htm>

Daffodils Indoors



Copyright 2010 by Carolyn Hawkins



Copyright 2010 by Carolyn Hawkins



Copyright 2010 by Carolyn Hawkins



Copyright 2010 by Carolyn Hawkins



Copyright 2010 by Carolyn Hawkins

Produced by the American Daffodil Society

Founded in 1954 to:

- Promote a wider interest in daffodils
- Create more exhibits of daffodils through shows and public plantings
- Set standards for daffodil shows and judges
- Promote and encourage scientific research on the genus *Narcissus*
- Serve gardeners' needs to learn more about all aspects of growing daffodils

Visit the American Daffodil Society Web Site

<http://www.daffodilusa.org/>

American Daffodil Society Webstore

<http://stores.daffodilusastore.org/StoreFront.bok>

DaffSeek – Daffodil Photo Database

<http://www.daffseek.org/>



The ADS was founded in 1954 to promote a wider interest in daffodils. The society and its members have set the standard for daffodil shows and judging and continues to encourage scientific research on the genus *Narcissus*.

As a member, enjoy benefits such as quarterly issues of *The Daffodil Journal*, an invitation to attend the Society's annual national convention, and the company of other daffodil enthusiasts!



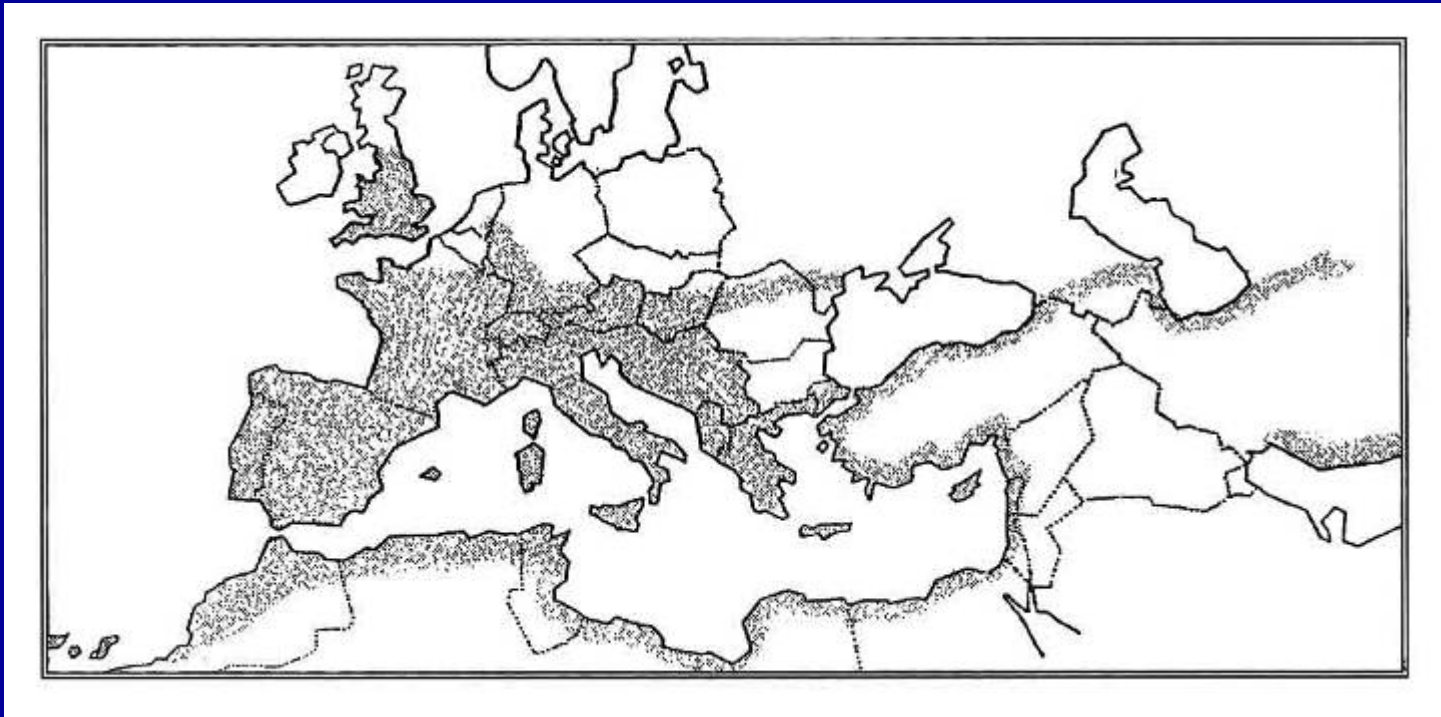
Find us on:



The American Daffodil Society, Inc.

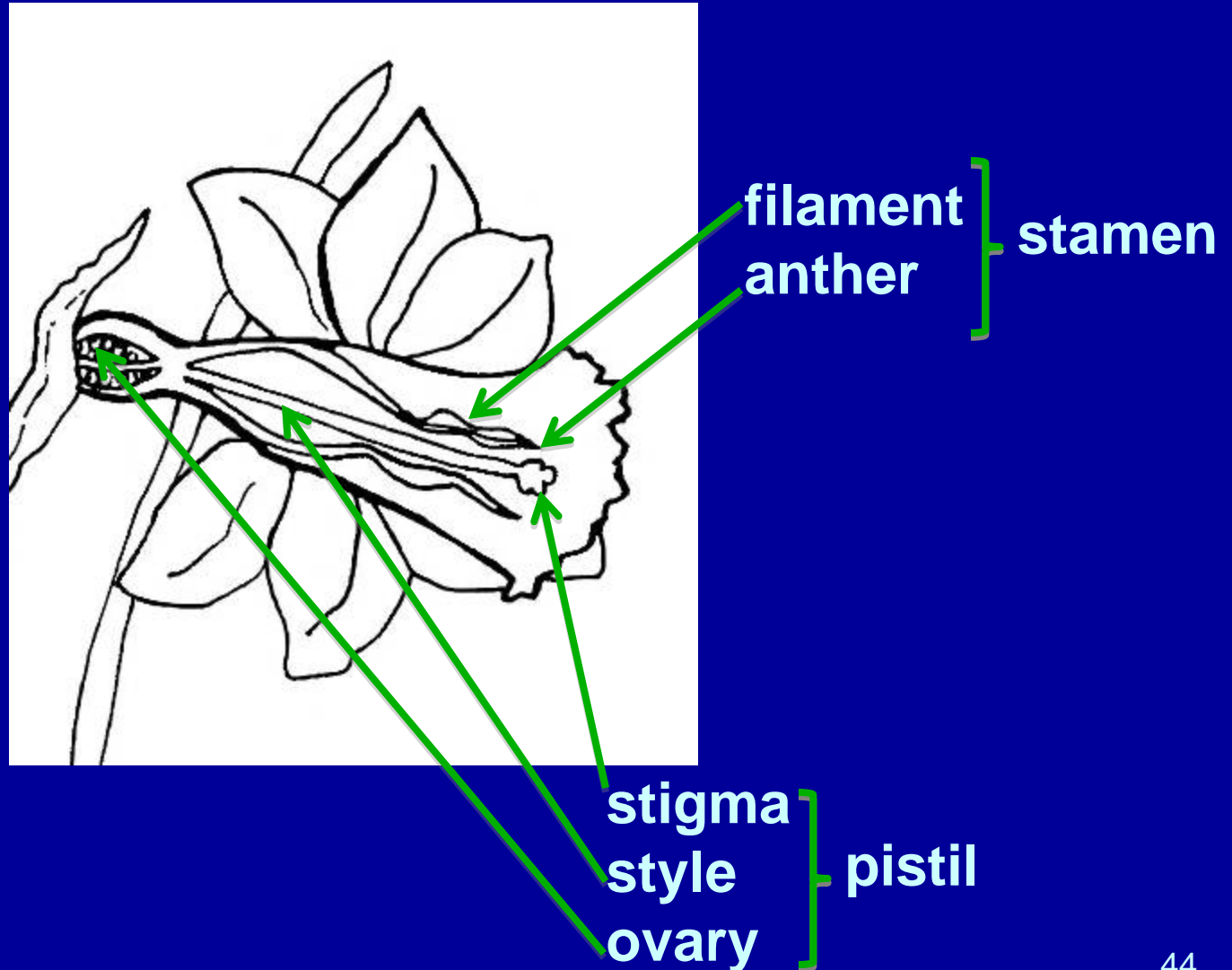
Visit the American Daffodil Society website to join today,
<http://www.DaffodilUSA.org>.

Where do Daffodils come from?

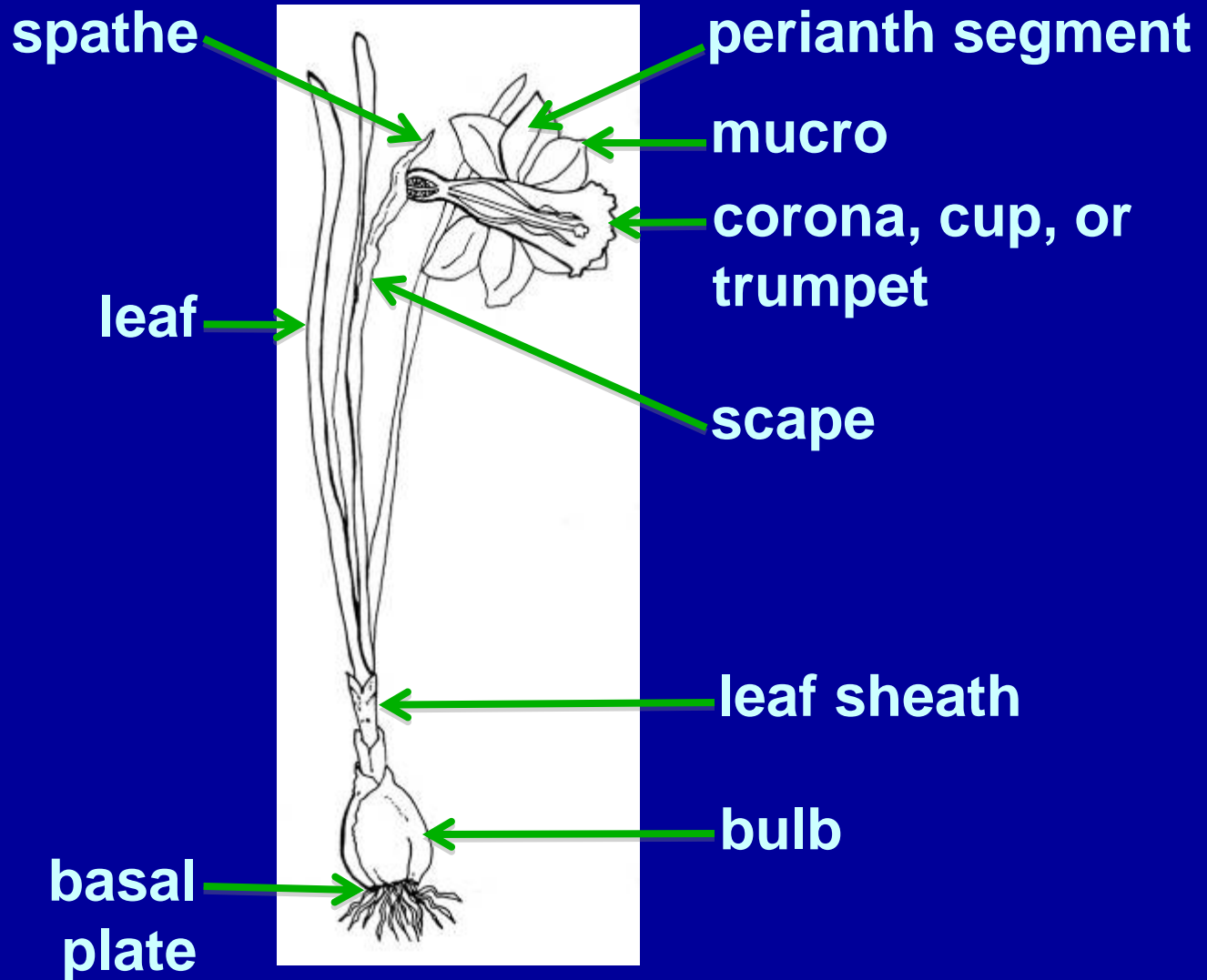


Approximate areas where wild daffodils may be found. Little is known of their distribution in many countries and a long history of cultivation makes it difficult to know if some plants are genuinely wild or are garden escapes. (Courtesy of the Royal Horticultural Society)

Making New Daffodils



Other Daffodil Parts



Daffodils in Containers



Daffodils don't have to be planted in the ground.

Daffodil Shows



**Once you're growing beautiful daffodils,
give other people a chance to see them.**

Judging Cultivars

Form	25 points
Condition	20 points
Substance & Texture	15 points
Color	15 points
Pose & Stem	15 points
Size	10 points
Total	100

Fall-Blooming Daffodils



***Narcissus serotinus* 13**



***Narcissus viridiflorus* 13**

Regional Differences

- **West**
- **East**
- **North**
- **South**